

JABIRU AIRCRAFT PTY LTD

P.O. Box 5792
Bundaberg West
Queensland, Australia.

Phone: +61 7 4155 1778
Fax: +61 7 4155 2669
Email: info@jabiru.net.au

SERVICE BULLETIN: JSB 030-1

Issue: 1

Date: 19th November 2010

Subject: J230 LSA Category Weight Limitations – South Africa

Issue	Reason for Issue	Issue Status
1	Original Issue	CURRENT

1	APPLICABILITY	1
2	BACKGROUND:.....	1
3	DETAILS	1
4	AIRWORTHINESS NOTE:	3

1 Applicability

- Jabiru J230 aircraft operating in the Light Sport Aircraft category in South Africa. This Bulletin is equivalent to a Manufacturer's Safety Direction for these aircraft.

2 Background:

- The recently released South African CAA regulation 24.01.2.P.2 "Classification Parameters" introduces new requirements for the maximum payload of Light Sport Aircraft.
- The existing configuration of the J230 model does not comply with these regulations and so this bulletin has been prepared to allow alterations to be made to the aircraft to enable it to comply.

3 Details

- Remove the existing baggage, fuel calibration and fuel capacity decals from the aircraft and replace them as follows:


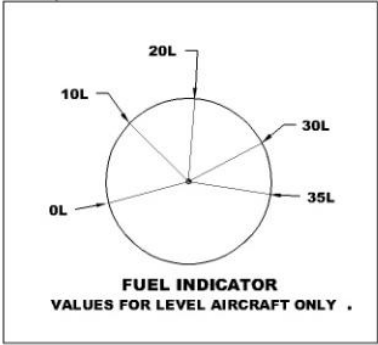
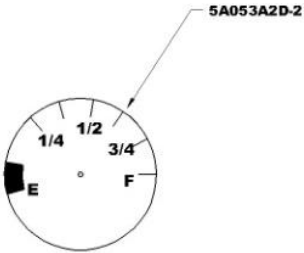
Table 1 - Decals

Details	Decal
Baggage P/No. 5A123A0D	<div style="border: 1px solid black; padding: 10px; text-align: center;">BAGGAGE COMPARTMENT 5KG MAXIMUM TOTAL</div> <p>Fit to right side fuselage wall immediately below window.</p>

Jabiru Service Bulletin: J230 LSA Category Weight Limitations – South Africa

JSB 030-1

19th November 2010

Details	Decal				
<p>Baggage P/No. 5A074A0D</p>	<div data-bbox="592 327 1299 577" style="border: 1px solid black; padding: 10px; text-align: center;"> <p><u>BAGGAGE</u></p> <p>LOAD BEHIND SEATS ONLY DO NOT LOAD AFT OF THIS POINT</p>  <p>REFER TO WEIGHT & BALANCE SECTION OF PILOT OPERATING HANDBOOK TO DETERMINE AIRCRAFT TRIM.</p> </div> <p>Fit to inside of fuselage on right side just below rear quarter window. Locate vertical line in line with rear of baggage shelf.</p>				
<p>Baggage Zones P/No. 5A063A0D</p>	<div data-bbox="617 703 1276 1014" style="border: 1px solid black; padding: 10px;"> <table style="width: 100%; border-collapse: collapse;"> <tr> <td style="width: 50%; border-right: 1px solid black; padding: 5px;"> <p>BAGGAGE ZONE A AFT LIMIT</p> <p>FORWARD LIMIT AT MAIN UNDERCARRIAGE.</p> </td> <td style="width: 50%; padding: 5px;"> <p>BAGGAGE ZONE B FORWARD LIMIT</p> <p>AFT LIMIT AT BOTTOM OF REAR BULKHEAD.</p> </td> </tr> <tr> <td colspan="2" style="text-align: center; padding: 5px;"> <p>SEE FLIGHT MANUAL SECTION 6 FOR DETAILS</p> </td> </tr> </table> </div> <p>Fitted on inside of fuselage on RHS of cabin. Locate line 500mm aft of seat backs.</p>	<p>BAGGAGE ZONE A AFT LIMIT</p> <p>FORWARD LIMIT AT MAIN UNDERCARRIAGE.</p>	<p>BAGGAGE ZONE B FORWARD LIMIT</p> <p>AFT LIMIT AT BOTTOM OF REAR BULKHEAD.</p>	<p>SEE FLIGHT MANUAL SECTION 6 FOR DETAILS</p>	
<p>BAGGAGE ZONE A AFT LIMIT</p> <p>FORWARD LIMIT AT MAIN UNDERCARRIAGE.</p>	<p>BAGGAGE ZONE B FORWARD LIMIT</p> <p>AFT LIMIT AT BOTTOM OF REAR BULKHEAD.</p>				
<p>SEE FLIGHT MANUAL SECTION 6 FOR DETAILS</p>					
<p>Electric Fuel Gauge Quantities. P/No. 5A105A0D</p> <p>Where Equipped.</p>	<div data-bbox="485 1140 1396 1532" style="text-align: center;">   <p>FUEL INDICATOR VALUES FOR LEVEL AIRCRAFT ONLY .</p> </div> <p>Fit inside wing root immediately aft of windows through to electric fuel gauge senders. Fit inner decal to outer in accordance with Procedure AVDALSR040-1</p>				
<p>Fuel Grade- Wing Tanks P/No 5A124A0D</p> <p>2 OFF</p>	<div data-bbox="713 1704 1203 1921" style="border: 1px solid black; padding: 10px; text-align: center;"> <p><u>FUEL</u></p> <p>AVGAS 100LL 33 LITRE CAPACITY EARTH ON POST</p> </div> <p>Attach to top skin of wing adjacent to Fuel Filler Cap.</p>				

Jabiru Service Bulletin: J230 LSA Category Weight Limitations – South Africa	
JSB 030-1	19th November 2010

- Remove the existing Pilot's Operating Handbook and replace it with the J230-DSA handbook, document number JP-FM-12 Rev 0 or later approved revision.
- Fit fuel tank filler sleeve P/No. 2A124A0D to the fillers of both wing tanks. Fit the sleeve as detailed in drawing 4A547A0D (Figure 1 below).

4 Airworthiness Note:

- Any work carried out with reference to this Bulletin must be carried out by authorised personnel. For the aircraft detailed herein this may mean the owner, an RA-Aus Level 2 holder, a Licensed Aircraft Maintenance Engineer (LAME) or equivalent – as appropriate to the aircraft's registration and use.
- On completion of the work the authorised person must record details of the change in the aircraft's maintenance logbook. This note should include details of the work done, the date and the identity (including licence number where appropriate) of the person carrying out the work.

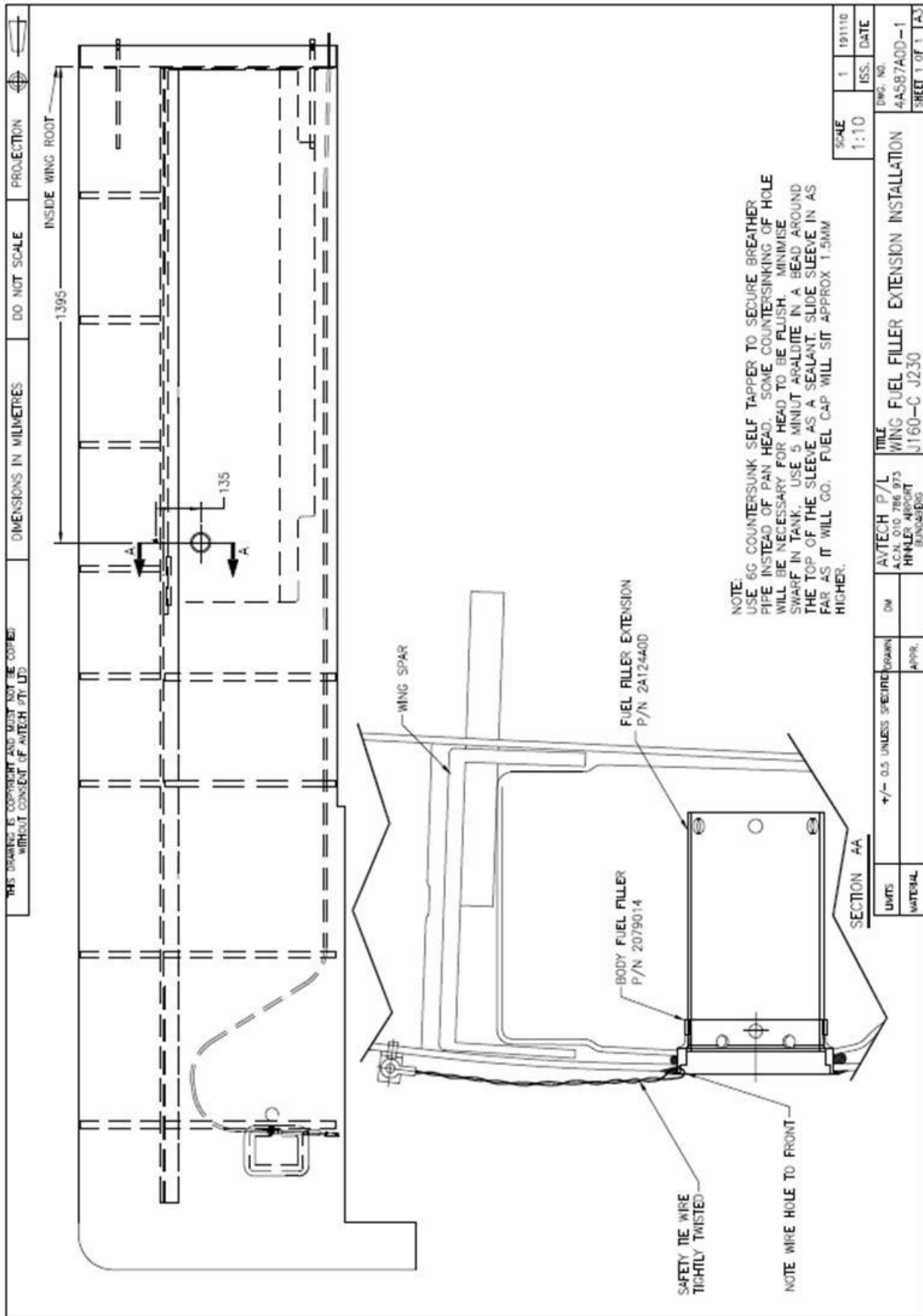


Figure 1 – Installation Drawing